

Hardtop Containers

20' Hardtop Container

ISO Type Group 22 UP

ISO Size Type 22 U6

Interior Dimensions			Door Opening		Maximum Gross Weight	Tare Weight	Payload	Volume
Length: 5886 mm	Width: 2342 mm	Height: 2313 mm	Width: 2336 mm	Height: 2276 mm	30480 Kgs	2700 Kgs	27780 Kgs	33.0 cbm
Length: 19' 3 3/4"	Width: 7' 8 1/8"	Height: 7' 7"	Width: 7' 8"	Height: 7' 5 5/8"	67200 lbs	5950 lbs	61250 lbs	1165 cu.ft

20' Hardtop Container Roof Opening Dimensions



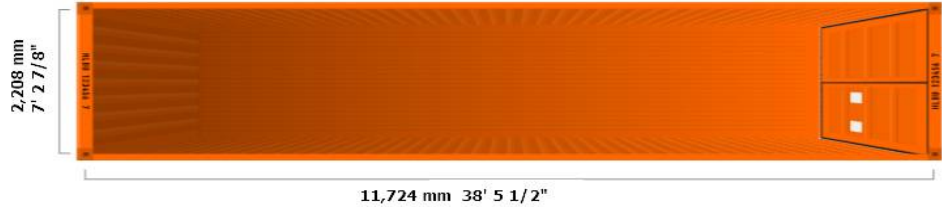
40' Hardtop Container

ISO Type Group 42 UP

ISO Size Type 42 U6

Interior Dimensions			Door Opening		Maximum Gross Weight	Tare Weight	Payload	Volume
Length: 12020 mm	Width: 2342 mm	Height: 2313 mm	Width: 2336 mm	Height: 2276 mm	30480 Kgs	4700 Kgs	25780 Kgs	67.2 cbm
Length: 39' 5 1/4"	Width: 7' 10"	Height: 7' 7"	Width: 7' 8"	Height: 7' 5 5/8"	67200 lbs	10360 lbs	56,840 lbs	2374 cu.ft

40' Hardtop Container Roof Opening Dimensions



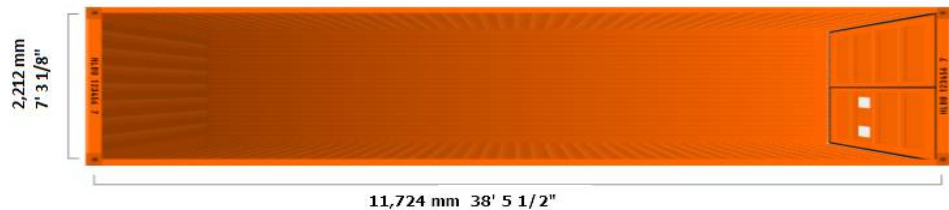
40' Hardtop High Cube Container

ISO Type Group 45 UP

ISO Size Type 45 U6

Interior Dimensions			Door Opening		Maximum Gross Weight	Tare Weight	Payload	Volume
Length: 12032 mm	Width: 2352 mm	Height: 2620 mm	Width: 2340 mm	Height: 2581 mm	32500 Kgs	5200 Kgs	27300 Kgs	76.3 cbm
Length: 39' 5 5/8"	Width: 7' 8 5/8"	Height: 8' 7 1/8"	Width: 7' 8 1/8"	Height: 8' 5 5/8"	71650 lbs	11470 lbs	60180 lbs	2695 cu.ft

40' Hardtop High Cube Container Roof Opening Dimensions



All dimensions are taken from Hapag Lloyd website. Container dimensions and payload limits may change from one container owner to another. Please consult your freight forwarder or carrier before planning your shipments.